



The American public has been deceived into a condition of civic paralysis based on the misperception that political disenfranchisement of The People in this country is already in such an advanced state that nothing can be done to reverse it and that the oligarchy's grip on the federal government is total and terminal.

This is not correct.

The Founders envisioned the possibility that the three branches of government may be seized totally by one small faction, who would then try to impose tyranny on The People. The Founders provided a remedy in the 5th (6th & 7th) Amendment to the Constitution's Bill of Rights.



The 5th Amendment provides that The People retain the right to organize grand juries to investigate crimes and present charges acting independently from the reach of the court. The function of the grand jury is to provide oversight of the government, ferreting out corruption.

The 5th Amendment begins: "No person shall be held to answer for a capital, or otherwise infamous crime, unless by a presentment or indictment by a Grand Jury." The term "presentment" refers to a charge brought by The People's Grand Jury, distinguishing such a charge from one brought by the officials of a court, which is called an "indictment."



The constitutional grand-jury powers of The People have been referred to as a “Fourth Branch of Government,” and have been affirmed by influential Justice Antonin Scalia, who stated:

Rooted in long centuries of Anglo-American history, the grand jury is mentioned in the Bill of Rights, but not in the body of the Constitution. It has not been textually assigned, therefore, to any of the branches described in the first three Articles. It is a constitutional fixture in its own right. The grand jury is an institution separate from the courts, over whose functioning the courts do not preside... In fact, the whole theory of its function is that it belongs to no branch of the institutional Government, serving as a kind of buffer or referee between the Government and the people.

Statement of Authorship

The following documents are brief summaries of 12 of the 60 evidentiary exhibits within the court petition for a Special Grand Jury to evaluate and make independent decisions on the many available actions it can take by law to resolve grievances by plaintiffs. The summaries were exclusively authored by volunteer staff.





Lawyers' Committee For 9/11 Inquiry

LCfor911.org

The Lawyers' Committee for 9/11 Inquiry is part of the 9/11 truth community focused on legal actions to counteract the breakdown in the US legal system that has prevented the events of 9/11 from being properly investigated.

Consistent with The People's Grand Jury powers, in 2018 the Committee filed a petition with the U.S. Southern District Court of New York (which has jurisdiction over Ground Zero) summarizing evidence of pre-planned controlled demolition of three World Trade Center skyscrapers, and citing the legal requirement that the U.S. Attorney impanel a Grand Jury to which the Petition and supporting evidence must be presented.

The full title of the Petition is:

First Amended Petition to Report Federal Crimes Concerning 9/11 to Special Grand Jury or in the Alternative to Grand Jury Pursuant to the United States Constitution and 18 U.S.C. § 3332(a)

The following exhibits are drawn from the Petition, representing 12 out of the Petition's 60 exhibits.

Exhibit 1

Super-thermite found in the dust at Ground Zero

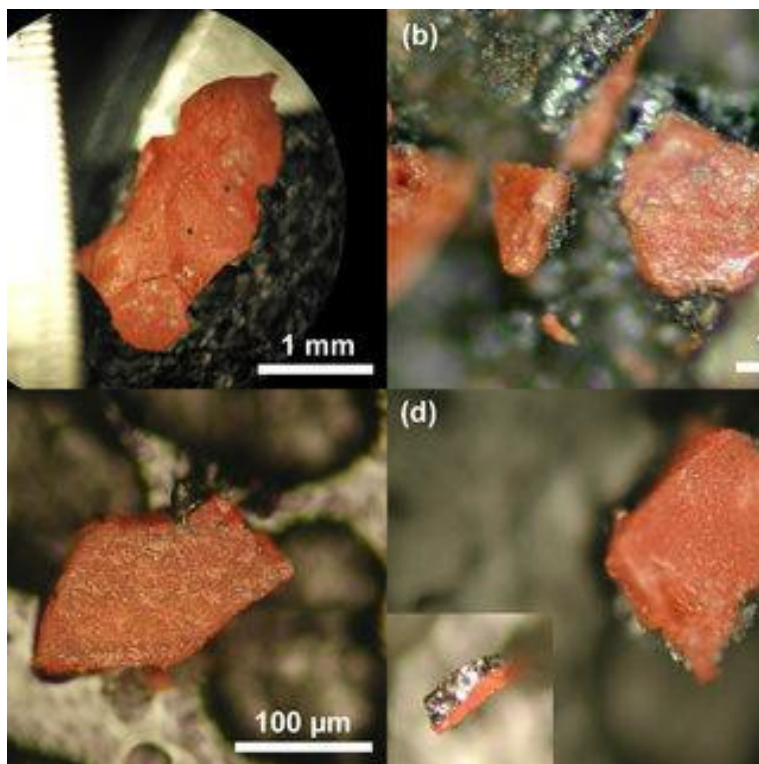


Exhibit 1

Distinctive red-gray chips were found in samples of WTC dust collected shortly after the fall of the WTC towers. Based on laboratory testing, scientists conclude that a chip's red layer constitutes active, unreacted thermitic, pyrotechnic, or explosive material. They propose this material to be “a means to ignite high explosives, as in super-thermite matches.”

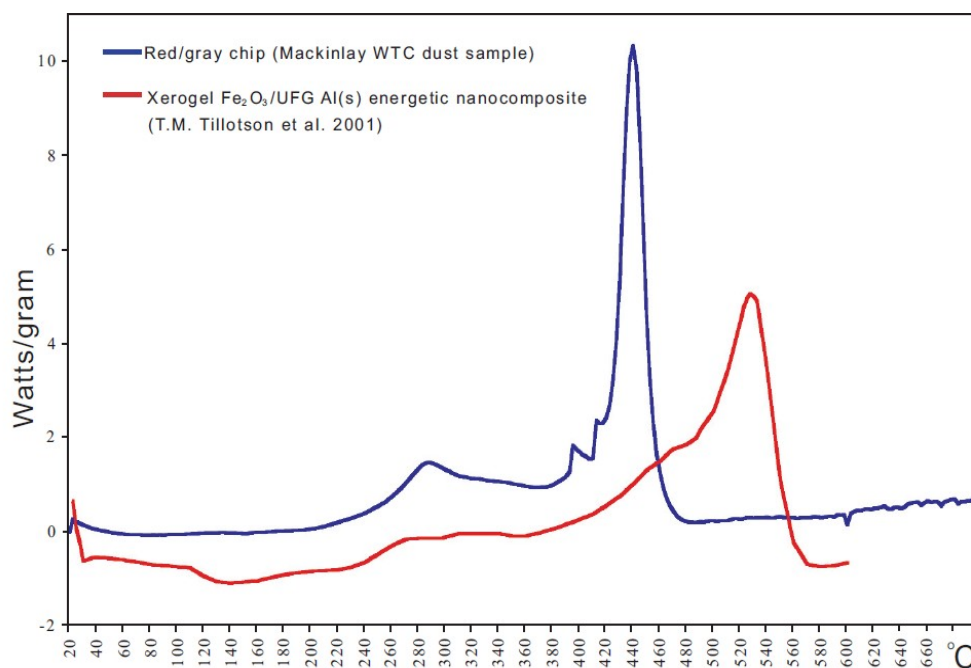


Fig. (29). DSC trace of sample 1 (blue line) compared with DSC of xerogel Fe₂O₃/UFG Al nanocomposite (from Tillotson *et al.* [28]). Both DSC traces show completion of reaction at temperatures below 560 °C.

Harrit, N.H., Farrer, J., Jones, S., Ryan, K., Legge, F., Farnsworth, D., Roberts, G., Gourley, J., and, Larsen, B., 2009, “Active Thermitic Material Discovered in Dust from the World Trade Center Catastrophe,” *The Open Chemical Physics Journal*, 2, 7-31.

Exhibit 2

Seismic data confirms demolition of WTC

Journal of 9/11 Studies

Volume 34, November 2012

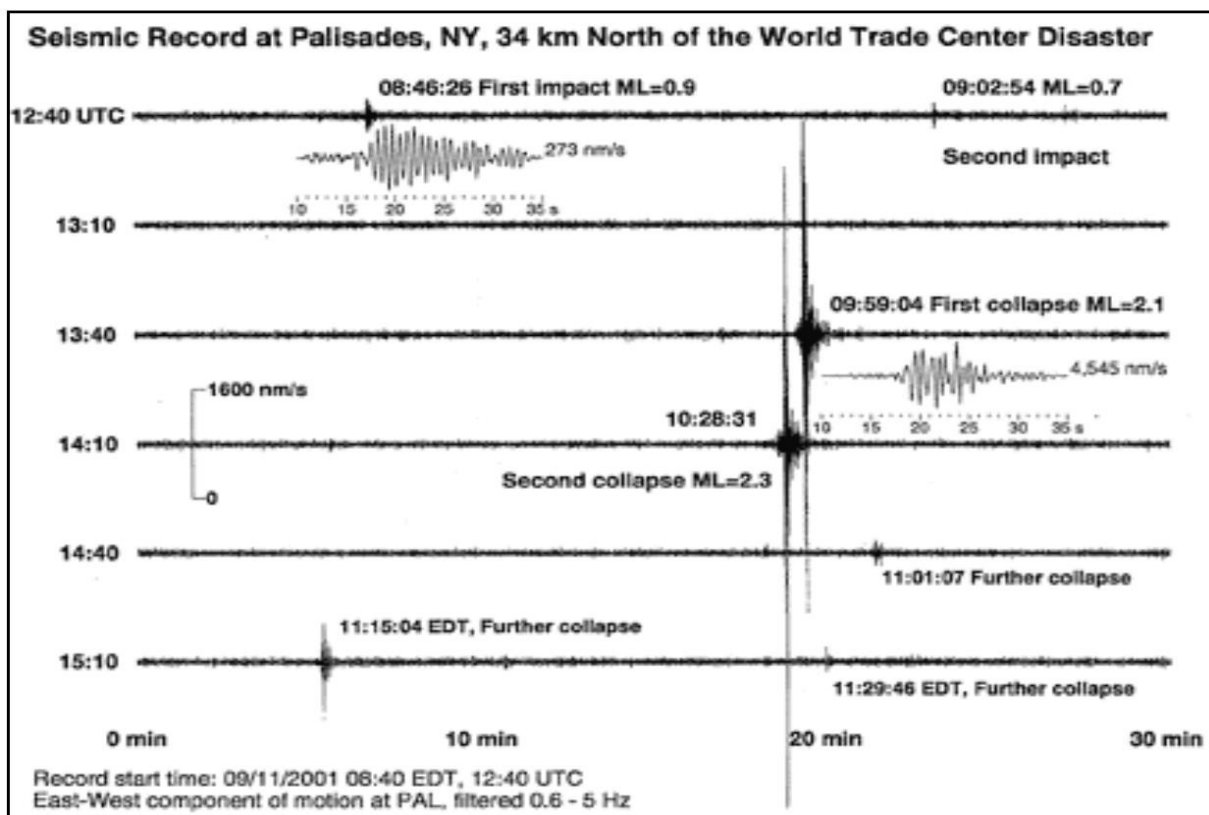


Figure 4: The seismic “peaks”

Exhibit 2

Doctoral researcher in geophysics and geology specializing in acoustic waves analyzes the various waves produced during the events of 9/11 and recorded by nearby wave detection centers. The author confirms controlled demolition of WTC1, WTC2, and WTC7 by analysis of the seismic waves emitted near the times of the plane impacts and at the moments of collapse initiation.

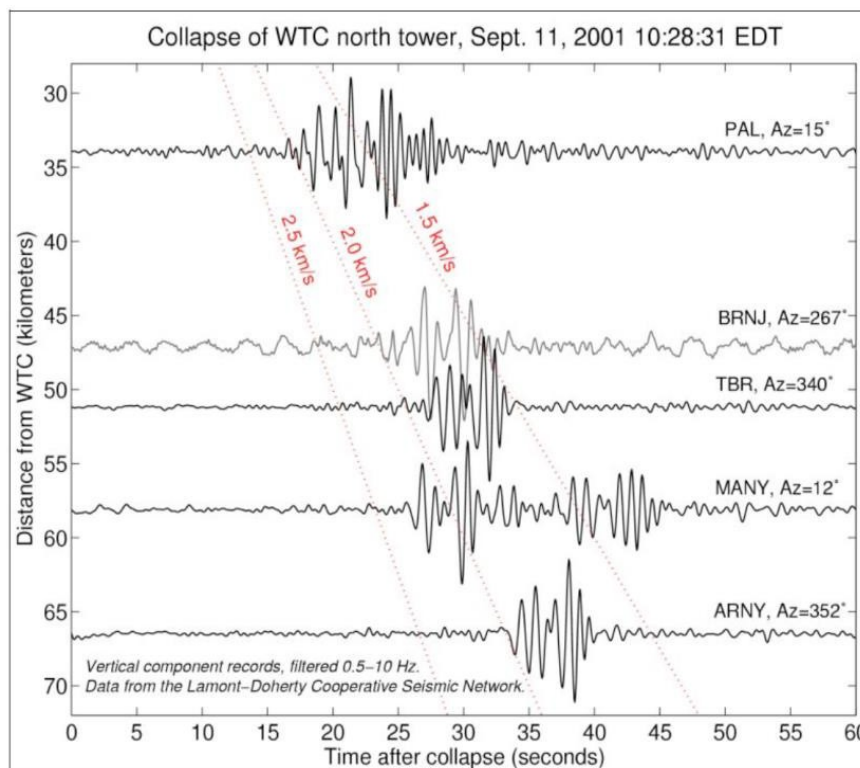


Figure 3: Research of the origin time for the signal emitted during the collapse of the north tower

Exhibit 3

Over 100 (expert eyewitness) firefighters report explosions inside WTC



Exhibit 3

Retired professor of religious studies at McMaster University scans the oral histories of firefighters, captured by the city fire commissioner on 9/11, as to what they said, heard, and thought at the scene of the crime. Author reports that 118 FDNY firefighters felt they were witnessing explosions that day.



MacQueen, G., 2006, "118 Witnesses: The Firefighters' Testimony to Explosions in the Twin Towers," *Journal of 9/11 Studies*, Vol. 2.

Exhibit 6

Officials knew
WTC7 was
going to fall



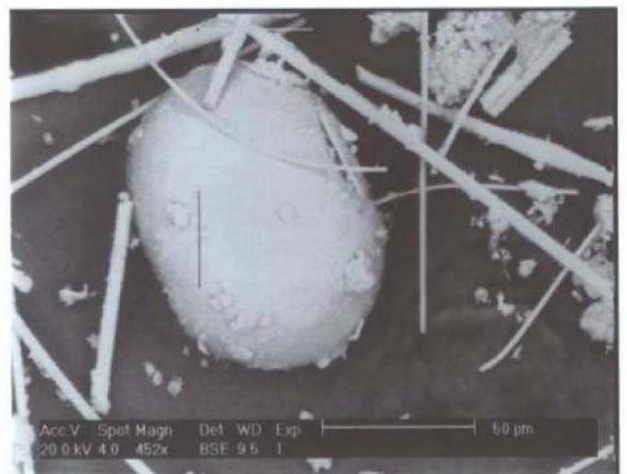
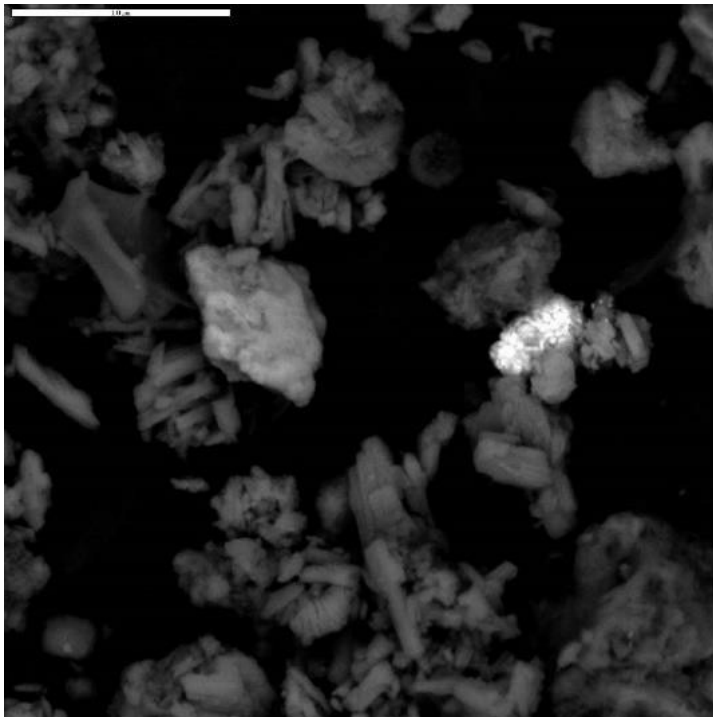
Exhibit 6

A researcher examines an abundance of evidence of advanced warnings that WTC7 was going to fall and refutes the theory that officials expected a natural collapse based on direct observation. Instead, he argues, officials accepted that WTC7 would collapse because they were told to expect it. Many take this foreknowledge as support for the theory that WTC7 was a pre-planned controlled demolition. Since at the time no steel-framed skyscraper had ever fallen based on fire alone, the collapse of WTC7 could not have been anticipated based on direct observation.

MacQueen, G. "Waiting for Seven: WTC 7 Collapse Warnings in the FDNY Oral Histories," 2008.

Exhibit 12

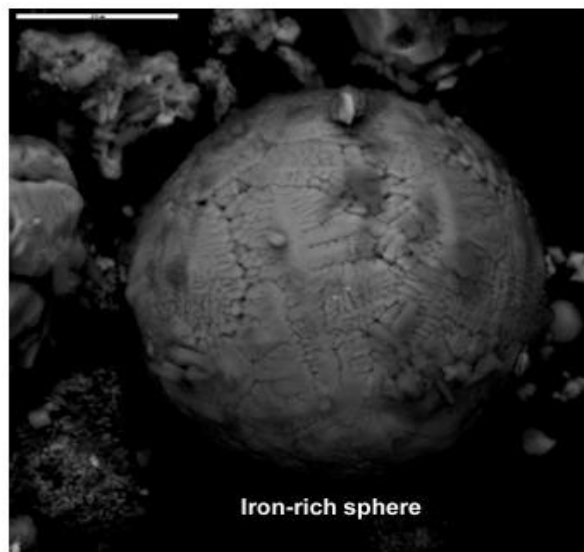
Elemental droplets in WTC dust prove extreme temperatures



Molybdenum spherule found in the U.S. Geological Survey's study of WTC dust

Exhibit 12

Physical scientists analyze microspheres in WTC dust samples. The temperatures required for the molten spherule formation and evaporation of materials observed in the dust [melted iron-oxide (2,800°F), vaporized lead (3,100°F), melted molybdenum (4,700°F), and boiled aluminosilicates (5,000°F)] are significantly higher than maximum temperatures associated with burning jet fuel and office materials (1,832 °F). Data provide strong evidence that violent and highly exothermic chemical reactions contributed to the destruction of the WTC buildings.



Jones, S., Farrer, J., Jenkins, G., Legge, F., Gourley, J., Ryan, K., Farnsworth, D., Grabbe, C. "Extremely high temperatures during the World Trade Center destruction."

Exhibit 15

Demolition squibs
burst from windows
as WTC falls



Exhibit 15

A scientist reviews the visual record and observes high speed bursts of debris ejected from point-like sources on the façades of WTC 1 & 2 as they disintegrate. The bursts occur on different faces of the buildings simultaneously and at different levels, up to 30 floors below the “collapse” front. Under the demolition hypothesis, the bursts of debris are visual evidence of the detonation of explosive charges placed at key points in the structures to raze them.

Ryan, K. “High Velocity Bursts of Debris from Point-like Sources in the WTC Towers.” 2007.

Exhibit 18B

Explosions captured
on film
of WTC1
collapse initiation

Exhibit 18B

Just before the top section of WTC1 begins to fall, large fireballs and cauliflower shaped clouds can be seen blowing out from the seams on all sides of the tower, in the area where the collapse begins.



Exhibit 20

Owner of WTC7
suggests demolition
in offhand remarks



Exhibit 20

At the time of 9/11, Larry Silverstein owned the WTC towers and Building 7. Silverstein was captured on film saying

“I remember getting a call from the Fire Department Commander, telling me they were not sure they were going to be able to contain the fire. I said ‘you know, we’ve had such terrible loss of life. Maybe the smartest thing to do is ... is pull it.’ And they made that decision to pull ... So then we watched the building [WTC7] collapse.”

Because at the time there was no reason to think that WTC7 would collapse from fire, and because “pull it” is a building deconstruction term that means “demolish it,” many have taken Silverstein’s use of the term “pull it” as an inadvertent admission of planned demolition.

Exhibit 31

Forensic analysis finds simultaneous failure of all columns in WTC7

Figure 3.3 Column 79 section showing side plates welded to a W14x730.

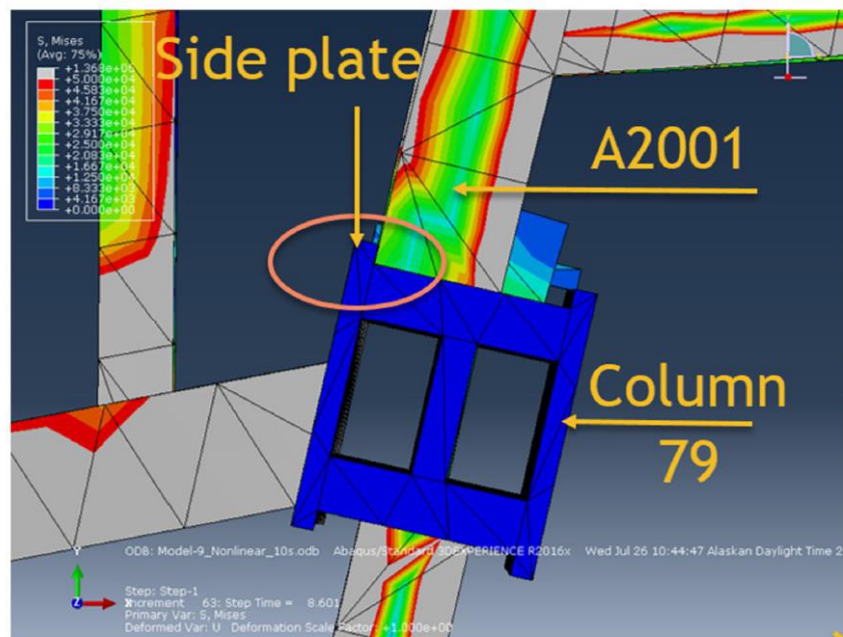


Figure 3.4 Plan view showing girder A2001 trapped by the Column 79 side plate.

Analysis finds that a critical girder could not have slid off its seat to initiate collapse, as claimed by the government, because it was constrained by a side plate.

Exhibit 31

Engineering Department at University of Alaska conducts a four-year, intensive forensic analysis of the failure of WTC7 and finds (a) 0% chance that fire caused WTC7 to collapse (b) observed motion required simultaneous failure of all columns, and (c) government's analysis done by NIST is riddled with errors such as structural elements inexplicably missing from computer models. The government's claim of fire-induced collapse is physically impossible.



Exhibit 32

Physics of WTC7 freefall indicate planned demolition

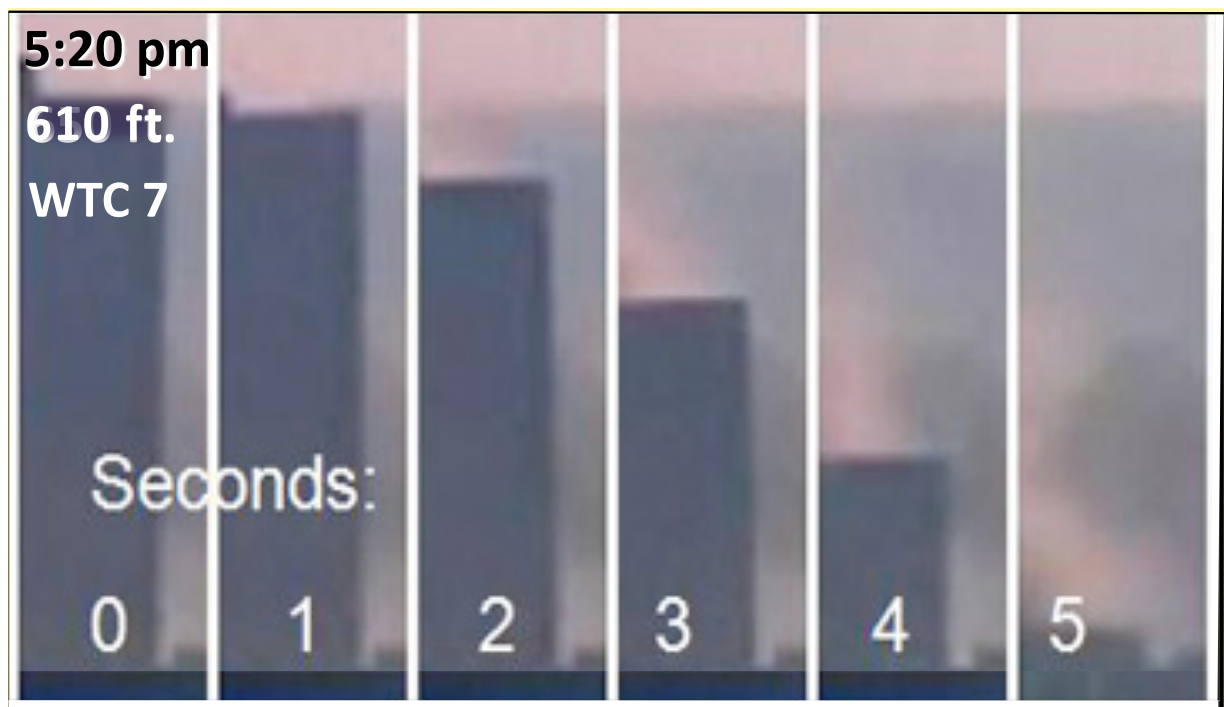


Exhibit 32

The motion of the falling roofline during the collapse of WTC7 (a 47-story skyscraper that was not hit by a plane but collapsed at 5:20 p.m. on 9/11) was analyzed by physicist David Chandler, who observed freefall acceleration during a significant time period. Newton's laws of motion provide that freefall only occurs when no resistance is encountered by a falling object. WTC7's freefall was possible only if it was destroyed in a controlled demolition.



The solid green line represents downward velocity at freefall acceleration and the green dots represent the observed downward velocity of WTC7's falling roofline.

Exhibit 35

Molten metal
pouring from a
corner of WTC2



Exhibit 35

Molten metal is seen pouring from the corner of WTC2 prior to collapse. The yellow color of the material, which is seen igniting and sparking as it falls, indicates very high temperature (minimum 2700° F), and is inconsistent with aluminum from the plane. White smoke plumes and trails around the metal stream are consistent with airborne aluminum-oxide, which is a byproduct of a thermite reaction.



It has been argued that the metal stream came from the airplane's aluminum. However, as seen above, aluminum retains its silvery color when melted to high temperature.

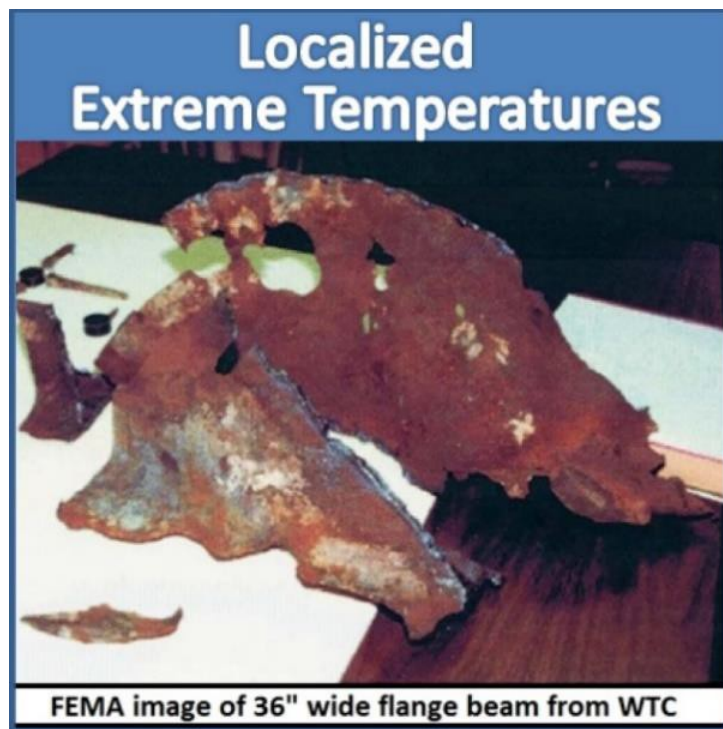
Exhibit 39

Molten metal
reported in the debris
pile at Ground Zero



Exhibit 39

Multiple eyewitness, including WTC engineers, professors, contractors, and firemen at Ground Zero report: red-hot steel members in the pile up to 2.5 months after attack, rivers of steel flowing in the debris pile, molten metal running down channel rails like in a foundry, probably melted concrete that flowed like lava, probable elements of steel-concrete fused together in extreme heat; steel members partly evaporated in extremely high temperatures, steel beams dripping with molten steel, and pools of molten steel.



The above exhibit summaries represent a modest portion of the 60 exhibits attached to the Lawyers Committee (see page 5) Grand Jury Petition. In the two decades since 9/11, concerned citizens -- including scientists, engineers, architects, firefighters, pilots, military and intelligence officers, and precious few politicians – have gathered abundant evidence about what factually occurred that day on Manhattan Island.

Based on the totality of evidence and analysis of that evidence to date within communities who are very concerned about the unending falsehoods of 9/11, it is widely accepted as scientific fact that all three World Trade Center buildings that failed totally on 9/11 were blown up in premeditated, controlled demolitions.

The exact materials used, where they were placed and by whom, IS knowable. And a surefire way to apply justice for what arguably is the most outrageous, PRE-MEDITATED mass murder of American civilians in U.S. history: IN THEIR NAME, **WE THE PEOPLE**, represented by public interest attorneys armed with solid, irrefutable evidence **DEMAND A GRAND JURY INVESTIGATION! NOW!!**

But the federal district court of Southern NYC dismissed the Lawyers Committee petition for a grand jury investigation. They said the plaintiffs lack “standing.” Plaintiffs include victims’ immediate family, fire chiefs, architects, engineers and supporters. This flies in the face of statutes going back 200 years and against Supreme Court precedents that have consistently upheld grand jury independence and powers.

Until 9/11 grievances are investigated by a grand jury, long-standing, once respected institutions will continue declining in stature, capability, and trustworthiness. Lacking the electorate’s trust, our influence as a democratic republic is weakening, supplanted by corrupt oligarchs psychotic technocrats catering to central bankers and their supra-elite masters.

Where is America headed -- by those who executed 9/11? What are they up to now? Did they merge with the next generation’s globalists abusing technology (e.g., medical passports, tracking chip implants, etc.) to control us? What’s next?

If you want to help get the word out on a local basis and/or more broadly, inquire

- at a Truth Booth
- by email: truthbooths@TruthActionProject.org
- or visit: <https://www.truthactionproject.org/contact-us>



We appreciate your visiting us!